

Supplementary materials to “CDE-GAN: Cooperative Dual Evolution Based Generative Adversarial Network”

Shiming Chen¹, Wenjie Wang¹, Beihao Xia¹, Xinge You^{1†}, *Senior Member, IEEE*, Qinmu Peng¹, Zehong Cao²,
and Weiping Ding³, *Senior Member, IEEE*

¹Huazhong University of Science and Technology, ²University of Tasmania, ³Nantong University
{shimingchen, wangwj54, xbh_hust, youxg, pengqinmu}@hust.edu.cn,
zehong.cao@utas.edu.au, ding.wp@ntu.edu.cn

In the main paper, we have displayed some samples generated by our proposed CDE-GAN on various natural image datasets, which have been given to show the effectiveness of the proposed CDE-GAN model. In this supplementary, we present more experimental results:

- Visual comparisons of different methods on CIFAR-10 and LSUN-Bedrooms.
- More generated results on three image benchmark datasets, i.e., CelebA, CIFAR-10, and LSUN-Bedrooms.

A. Visual Comparison for Different Methods



Fig. 1: Visual comparisons of different methods on CIFAR-10. The samples generated by different methods are provided by the original literatures.



Fig. 2: Visual comparisons of different methods on LSUN-Bedrooms. ‡ Results provided by [15].

† Corresponding author

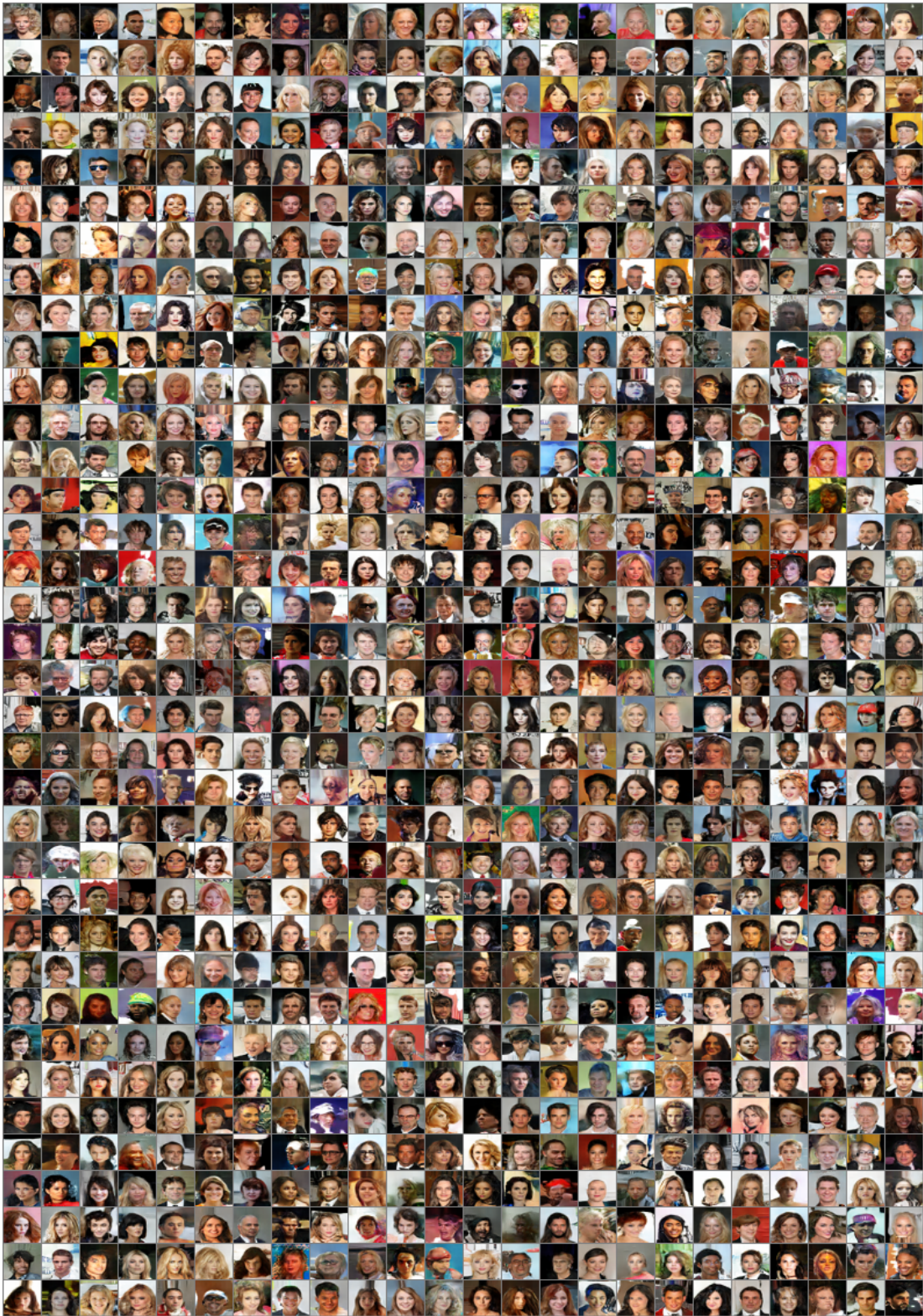
B. Results Generated by CDE-GAN

Fig. 3: Samples generated by CDE-GAN on CelebA.



Fig. 4: Samples generated by CDE-GAN on CIFAR-10.



Fig. 5: Samples generated by CDE-GAN on LSUN-Bedrooms.